




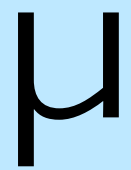
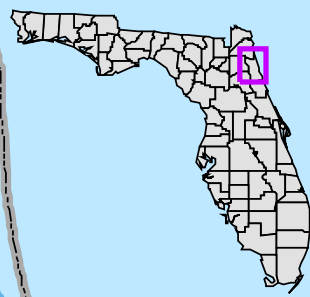
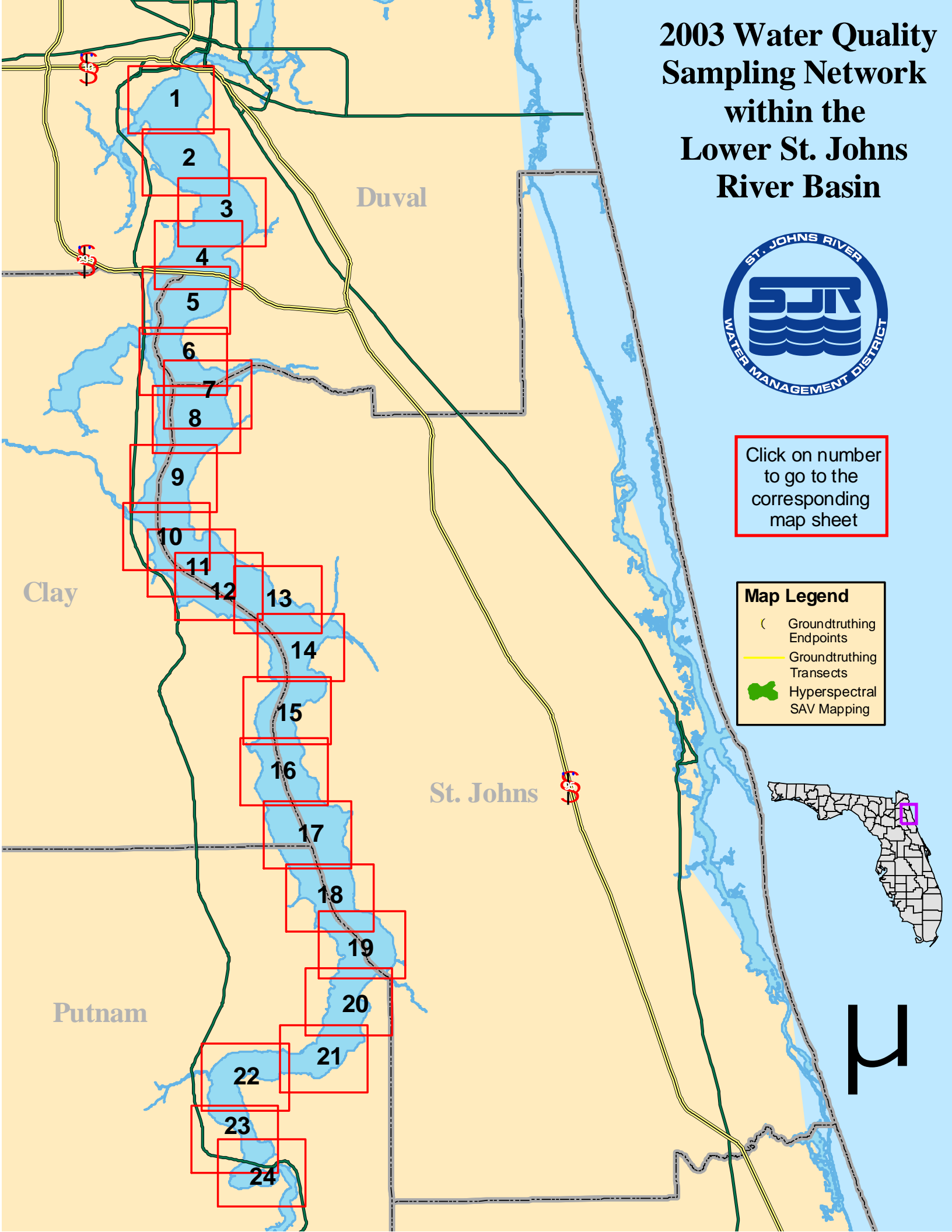
# 2003 Water Quality Sampling Network within the Lower St. Johns River Basin

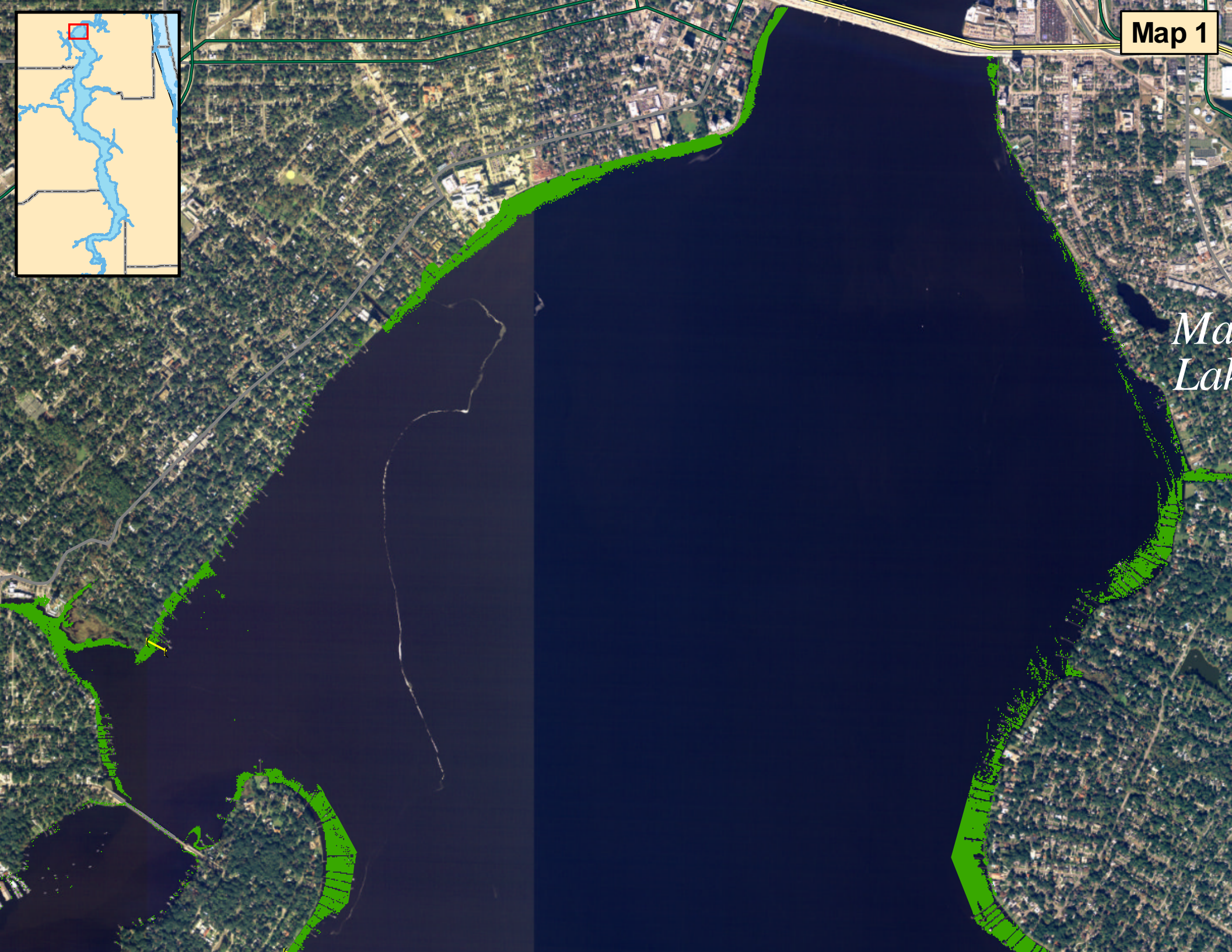
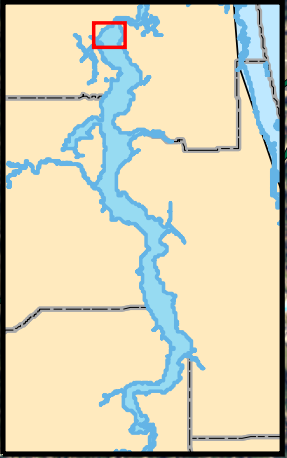


Click on number to go to the corresponding map sheet

**Map Legend**

-  Groundtruthing Endpoints
-  Groundtruthing Transects
-  Hyperspectral SAV Mapping

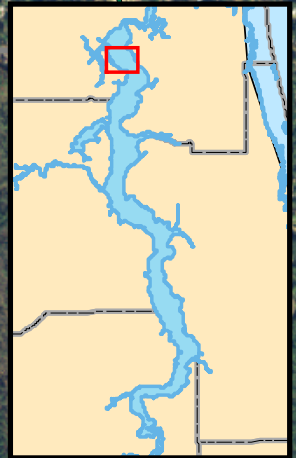




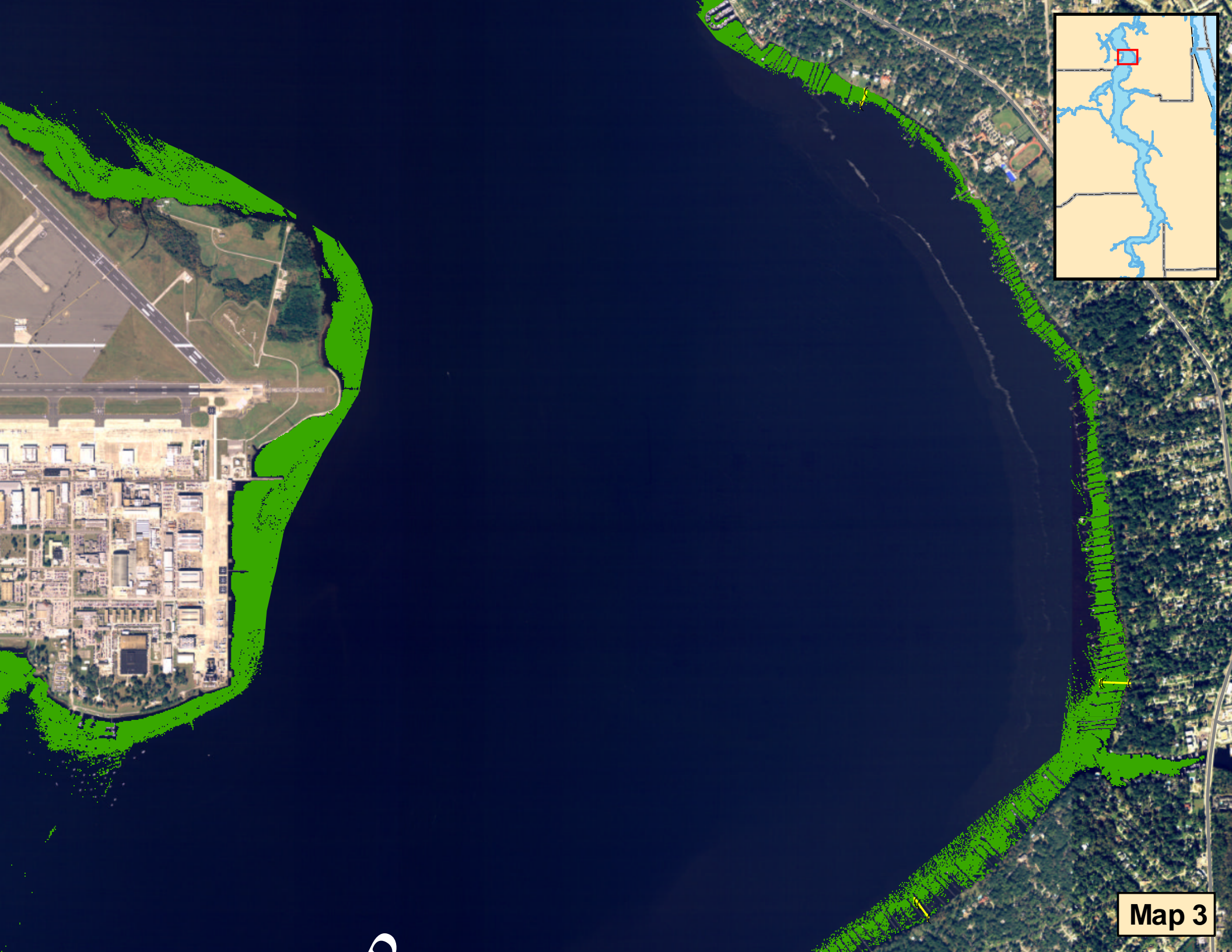
*Ma  
Lak*



*Yacht Basin*







Map 3





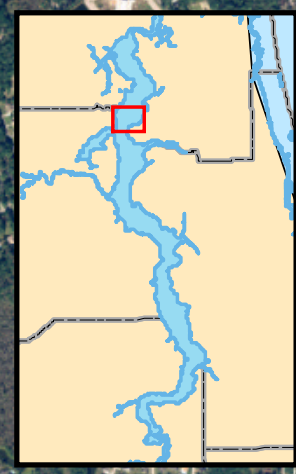
RIVER

Plummers  
Cove



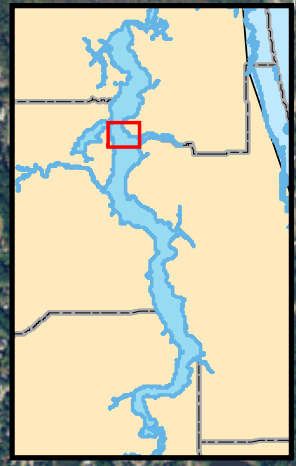
Map 5

Co



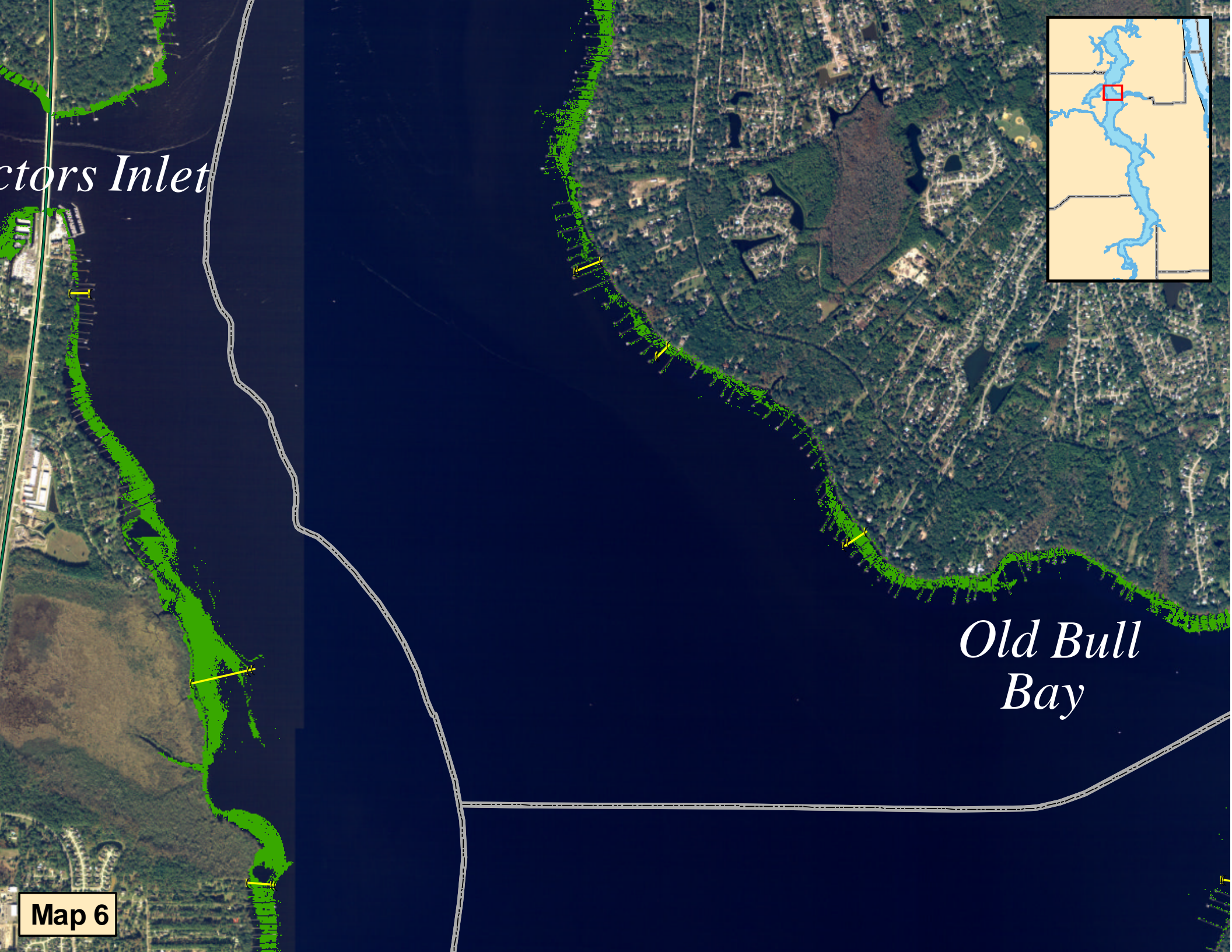


*ctors Inlet*



*Old Bull Bay*

**Map 6**





*Old Bull Bay*

JULINGTON

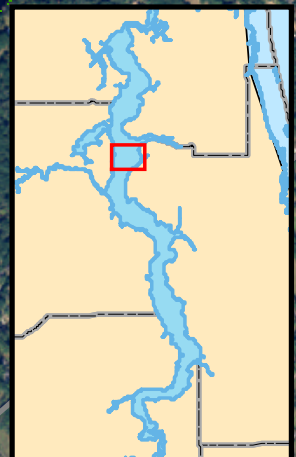
JOHNS



Map 7

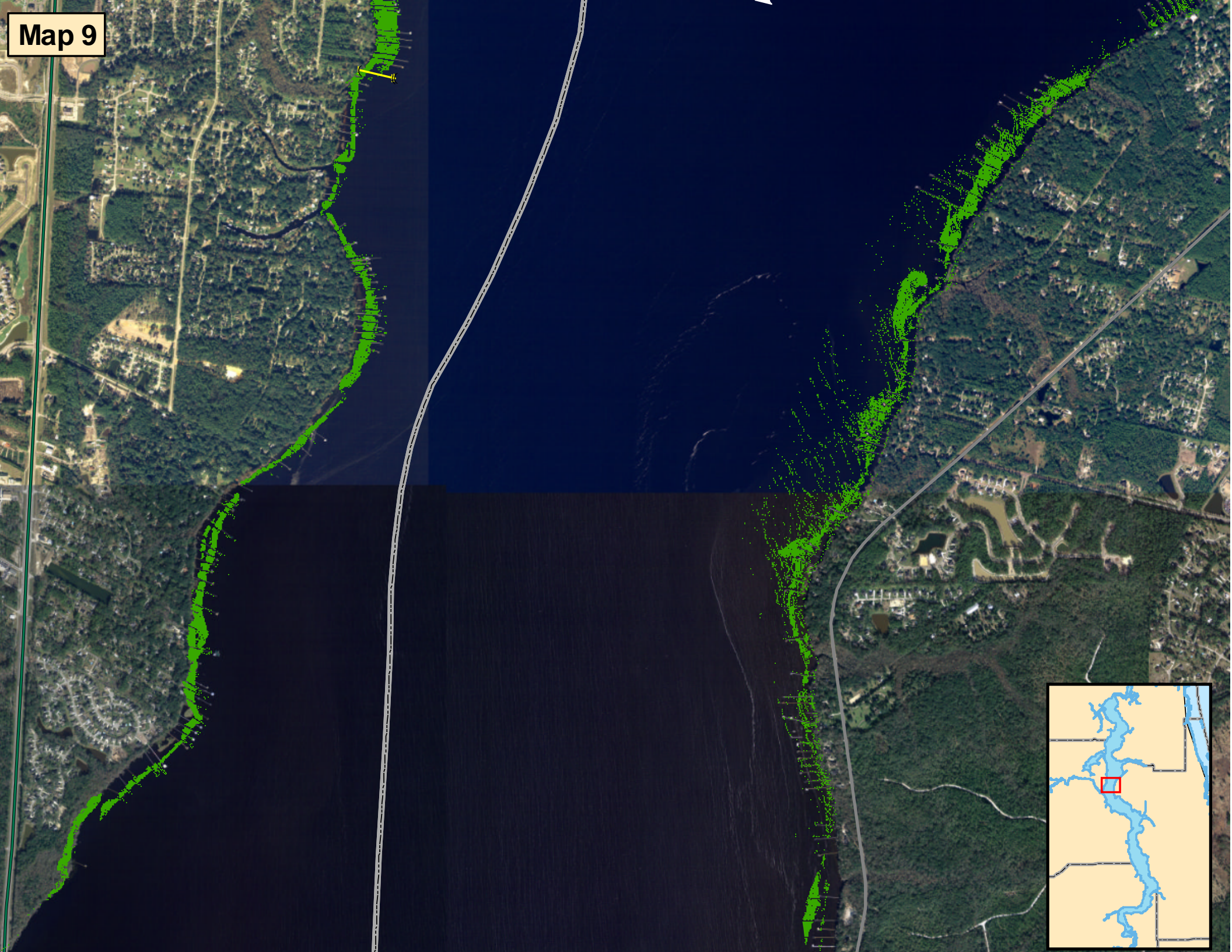


ST JOHNS IS

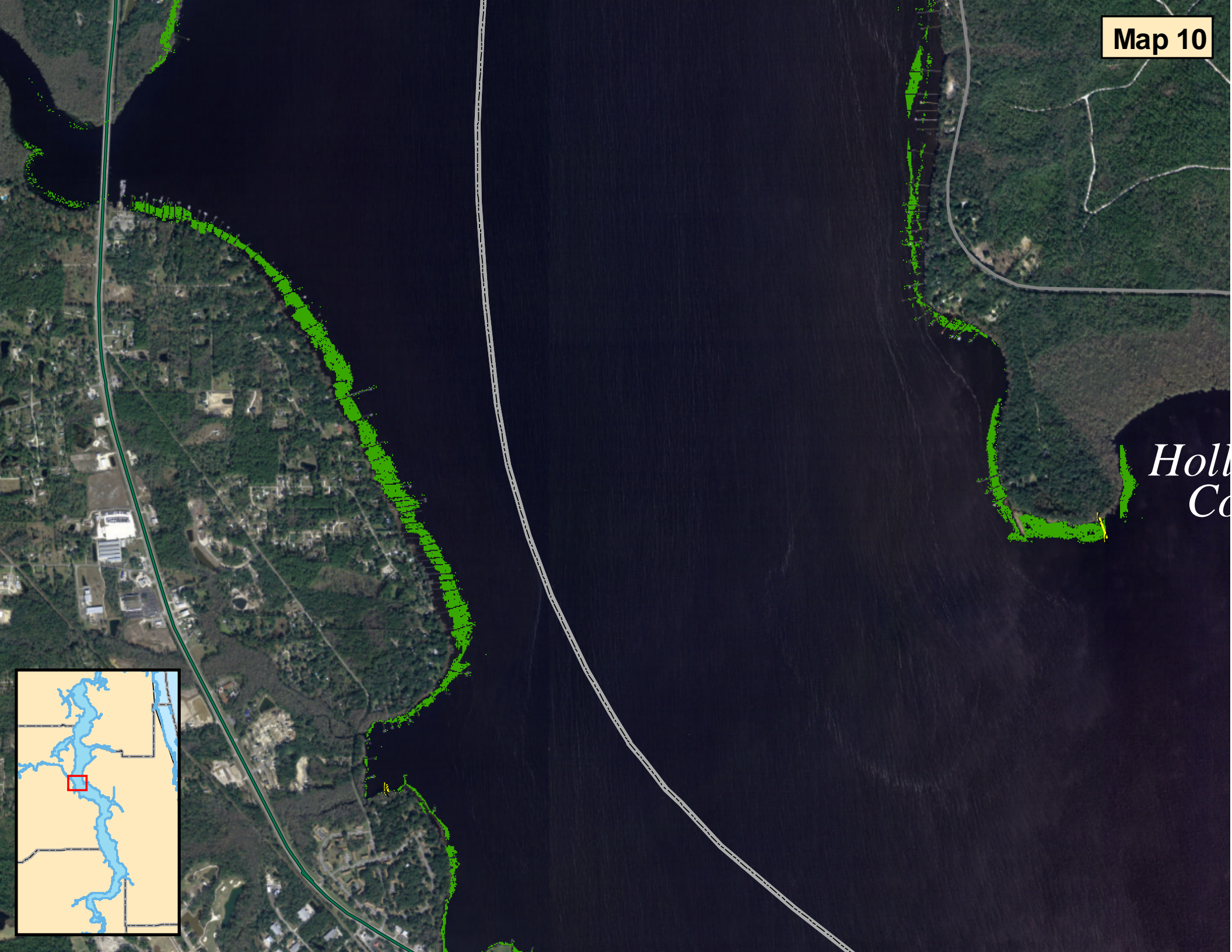




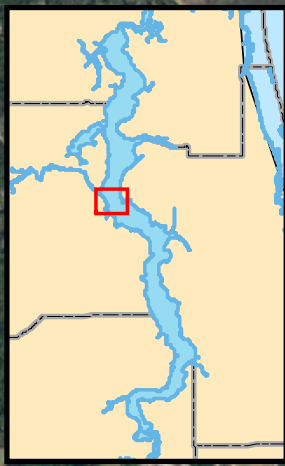
Map 9





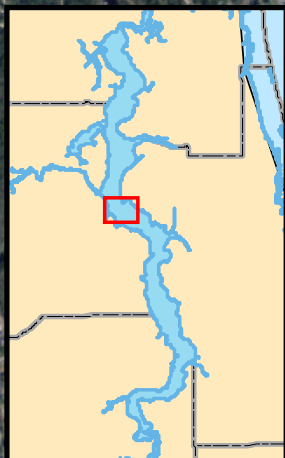


Holmes  
County

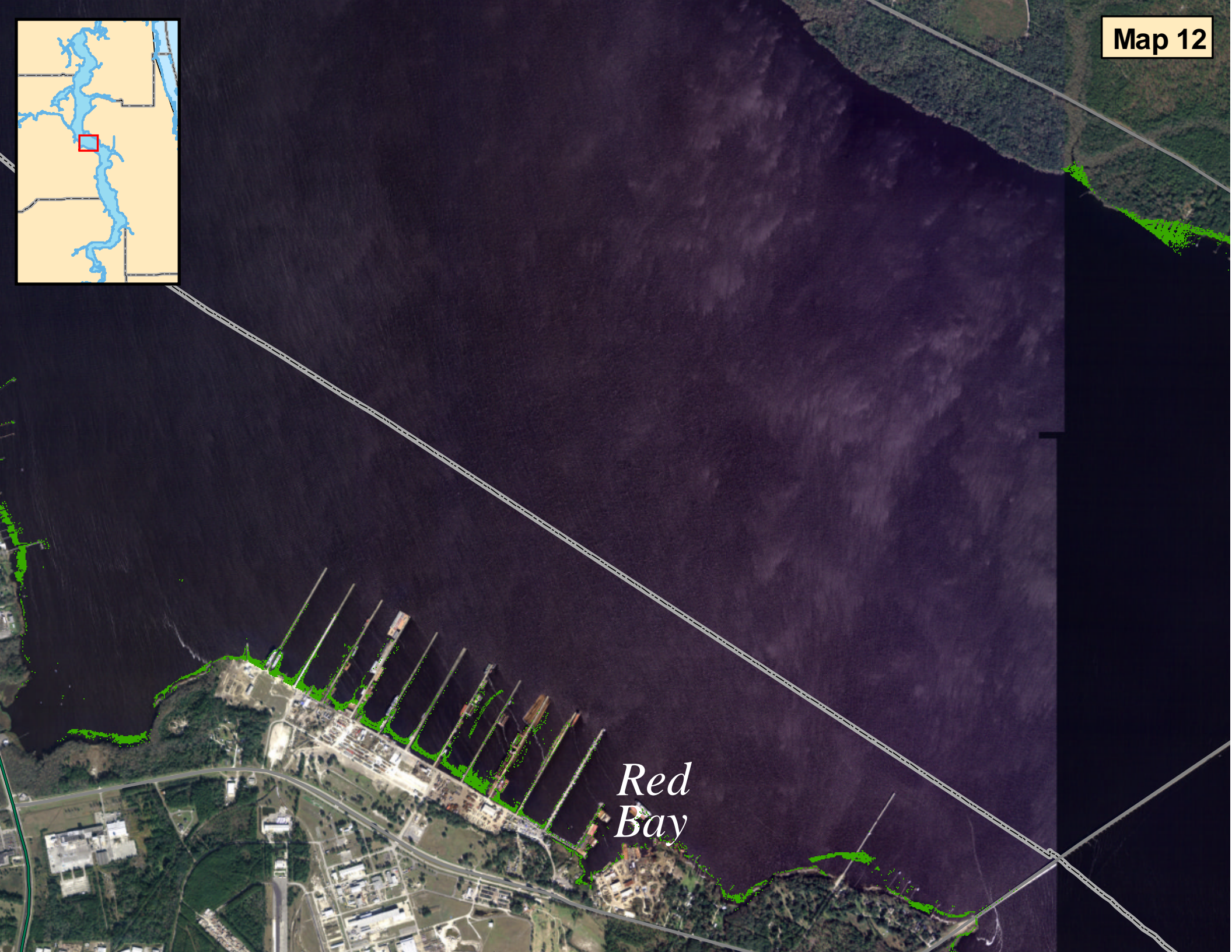




*Hollowes  
Cove*

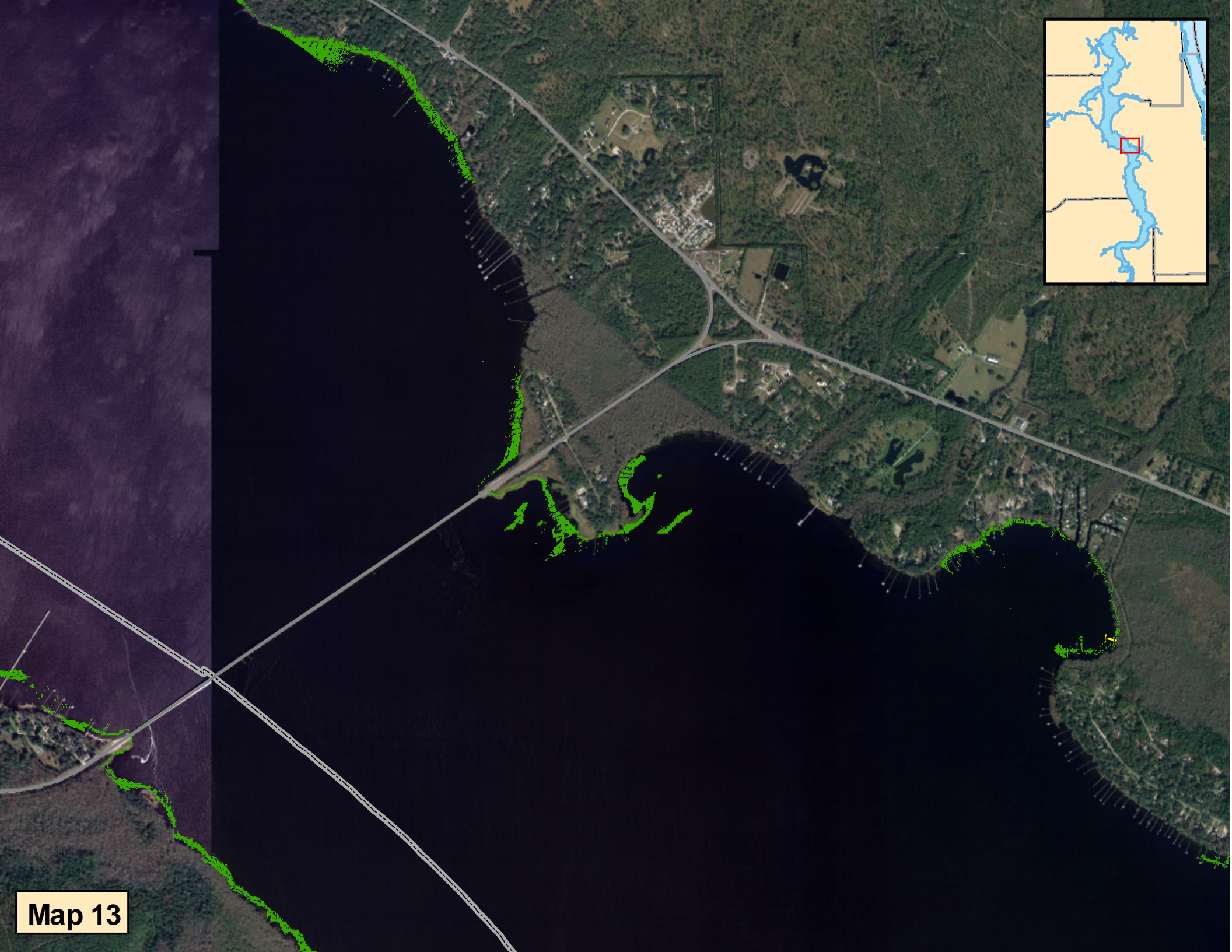






*Red  
Bay*





Map 13





Tro

*Sulphur Spring  
Cove*

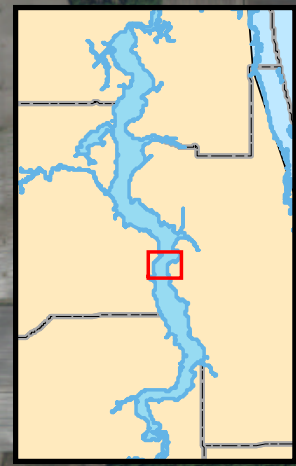
*Puerto Rico  
Cove*

Map 14





Map 15







ST JOHNS

*Silano  
Cove*

Map 16

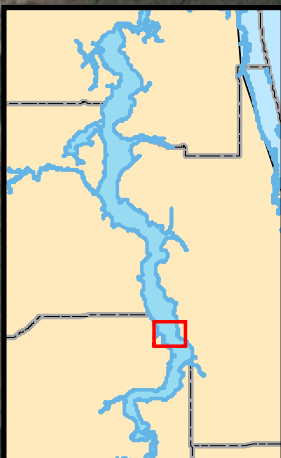






RIVER

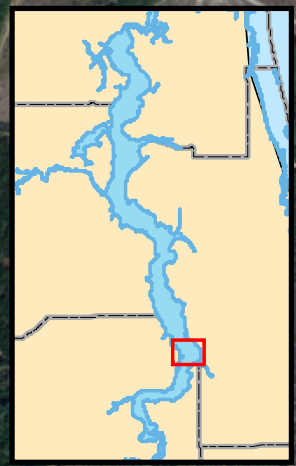
Creek







Map 19





Map 20



Mason

Br





*RIVER*

*Murphys  
Cove*

*Do*

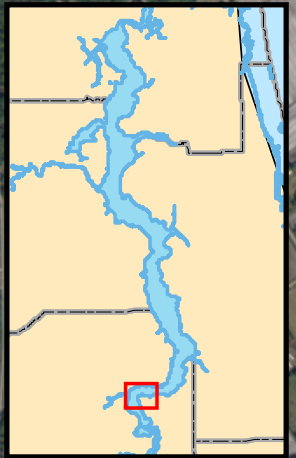




ST JOHNS

Warner Cove

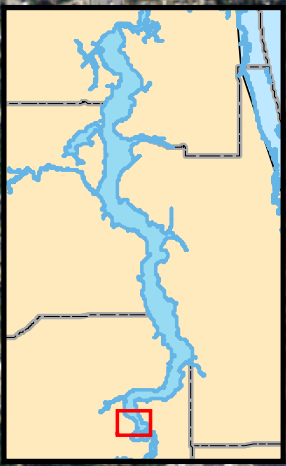
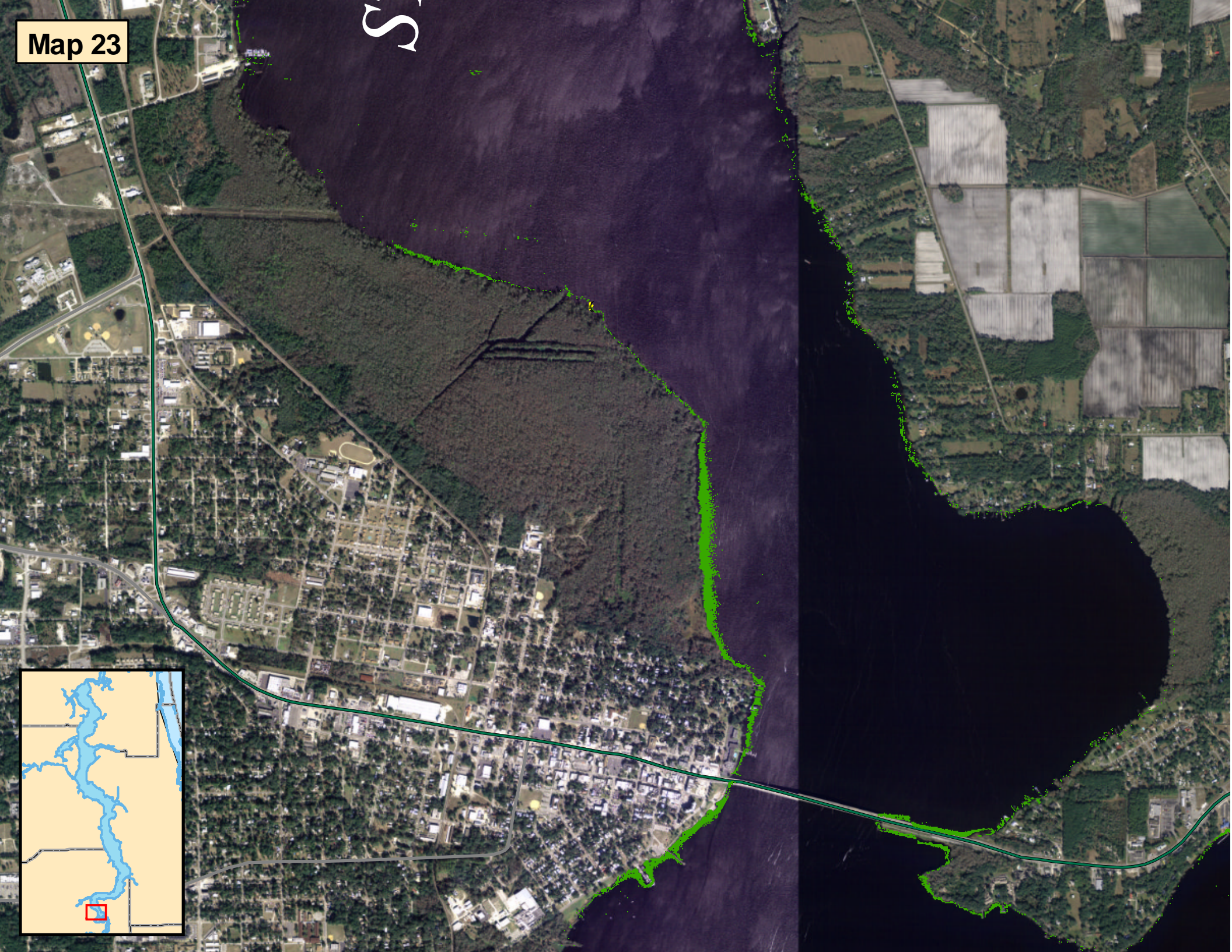
RIVER





Map 23

S





Map 24

